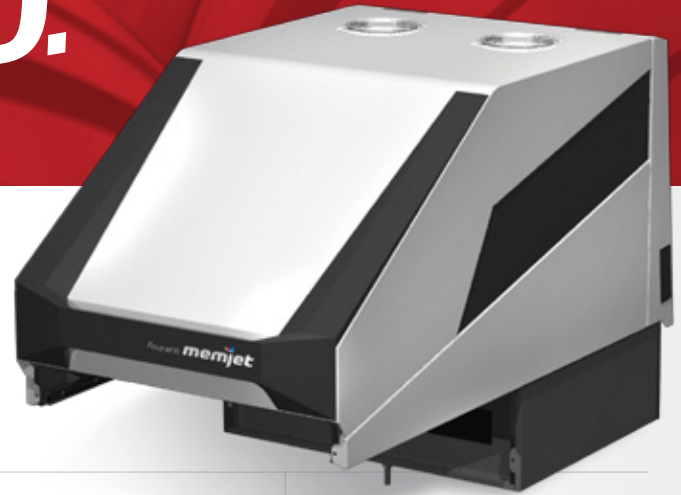




TURNING LABEL PRINTING ON ITS HEAD.



Memjet is the global leader in color printing technologies that provide remarkable speeds and affordability.

COST-EFFECTIVE TECHNOLOGY

Memjet technology is an entirely new printing category that brings cost-effective, on-demand color printing to the manufacturing floor. Memjet-powered printers give you the freedom to print exactly what you want, when you want it and where you want it, making in-line color label printing possible for just-in-time printing and other manufacturing operations. This kind of flexibility means reduced waste, accelerated workflow and the ability for brand owners and manufacturers to move their label, tag, ticket, card, and folding-carton printing out of a centralized print facility and directly onto their factory or warehouse floors.

HIGH-QUALITY, COST-EFFECTIVE AND ON DEMAND

The Memjet Labels OEM Production Class print engine features over 350,000 nozzles (70,400 nozzles per color x 5 colors) that deliver millions of drops of ink every second. When configured with up to 5 printheads, our page-wide printhead delivers 1,600 dpi native print resolution in both process color (CMYK) and spot color. The labels print engine can deliver speeds up to 32 inches per second. Each ink color is delivered via a 10-liter ink tank.

OEM PRODUCTION CLASS PRINT ENGINE FEATURES

- High resolution/High speed
- Five independent color channels
- Industrial grade media path
- Secure Quality Assurance Infrastructure (QAI)
- Flexible Application Programming Interfaces (APIs)
- Support for user interface development and access to I/O's

To learn more about Memjet

Memjet-powered label printers are sold only through authorized Memjet OEM partners. For more information on Memjet OEM partner products, please visit www.memjet.com



OEM PRODUCTION CLASS LABELS PRINT ENGINE TECHNICAL SPECIFICATIONS

PRINTING CAPABILITIES

Print method:	Drop-on-demand thermal inkjet
Printhead configuration:	Up to 5 Memjet printheads on blades
Ink colors:	Up to 5 colors: CMYK, or CMYK plus 1 spot color, or up to 5 spot colors. Spot colors by custom order, subject to availability and lead time
Nozzle count:	352,000 nozzles (70,400 per color)
Maximum dot rate / Line fire frequency:	Over 3 billion dots per second / 9.6 kHz per printhead
Maximum printable width:	8.69" (220.7mm)
Print speed:	Variable speed up to 32 inches (81.28 cm) per second, or 160 feet (48.7 meters) per minute
Print resolution:	1600 dpi X 1200 dpi at 32 inches (81.28 cm) per second

INK AND MEDIA

Ink tanks:	Up to five 10-liter ink tanks (C, M, Y, K and user-swappable spot color)
Ink quality management:	Memjet Quality Assurance Infrastructure (QAI) system
Media type:	Water-based inkjet compatible media
Media thickness:	Media feed system provided by OEM, PPS adjustable accordingly
Media sensing (optional):	Transmissive for label sensing Reflective for black mark
Maximum print width:	8.69" (220.7 mm)
Minimum media width:	2" (50.8 mm)
Maximum media width:	Dependent on OEM-controlled media handling system
Maximum continuous print run:	Dependent on OEM-controlled media handling system

PRINT ENGINE CONNECTIVITY

Interface:	USB, Ethernet
Host operating system:	Driver for Windows 7, with reference design user application API for OEM custom driver development

PRINT ENGINE DIMENSIONS, WEIGHT, POWER

Dimensions:	Width: 24.40" (619.7 mm), Height: 24.66" (626.4 mm), Depth: 41.51" (1054.4 mm)
Weight (dry):	242.51 lb. (110 kg)
Power requirement:	100 - 240 VAC, 50/60 Hz 8.5A

ENVIRONMENTAL LIMITS

Environmental operating temperature:	15° C to 35° C (59° F to 95° F)
Humidity:	20% to 80% RH non-condensing
Atmospheric pressure:	70 kPa to 106 kPa
Storage / Transport temperature:	-5° C to 45° C (23° F to 113° F),
Atmospheric pressure:	70 kPa to 106 kPa
Options:	Ink tank rack, Media handling system, Vacuum print platen, Computer monitor

Subject to change.