

W+D Halm *i*-Jet 2

Four+ Color High-Speed
Inkjet Envelope Press



W+D

Halm *i*-Jet 2

W+D

The Four+ Color High-Speed Inkjet Envelope Press

The W+D **Halm i-Jet 2** enables high-quality digital printing in a resolution of 1600 x 1375 dpi for the printing of envelopes and other non-coated paper. The high print quality and the quick, easy workflow for job changes make it the ideal machine for small and medium runs ranging from a couple to well over 100,000 envelopes. The envelopes are held in position on a vacuum media belt and transported to the commercial grade high-resolution print engine, ensuring image registration and the highest print quality. The result is precise, sharp, images and type almost to the very edge of the envelope. With variable data capability every full color image can be different and a job change on the same stock can be made without stopping the press, truly zero set-up at full speed.



Advantages of inkjet overprint for short to medium runs

- / 32,000 or DL/#10 and smaller envelopes/hour
- / High image resolution of up to 1600 x 1375 dpi even at maximum printing speed
- / Inkjet printing does not show any dot gain or color shift printing over seam lines or flaps improving the printed image is consistent on full coverage copy
- / Printing of embossed papers without loss of print quality
- / Significantly shorter changeover times compared to the setup times associated with an offset presses
- / Envelope feeder for quick and easy size change (upper feeder optional)
- / No expensive laser window film or special papers required
- / Easy printing of window envelopes with standard films
- / Reduced job costs compared to offset and other digital devices for print with moderate ink consumption (company logos, product advertising, etc.) for print runs of well over 100,000 pieces. Almost any job of 30.000 or under will cost less to produce regardless of coverage.
- / Four separate standard CMYK Memjet inkjet print heads and a 5th special color is optionally available
- / Minimal waste, even with 4-color process or halftone printing job set up
- / Paper thicknesses from 0.1 mm (.004") to 0.8 mm (.032") can be fed reliable
- / Intelligent order tracking by number or order descriptions
- / PMS & customer colors can be saved by job or globally
- / Create an adjusted PMS book for digital match
- / Order data can be used storing, archiving and recalling of the stored settings guarantees the highest repeat accuracy even with regard to color fidelity



Powerful RIP, data transfer and print head control

Extremely powerful RIP

In combination with the installed computing power and a separate RIP PC, Navigator offers one of the fastest professional RIPs available for Memjet devices based on the Harlequin Rip. This means that the maximum print speed can also be called up for complex, high-resolution variable print jobs.

Ink supply

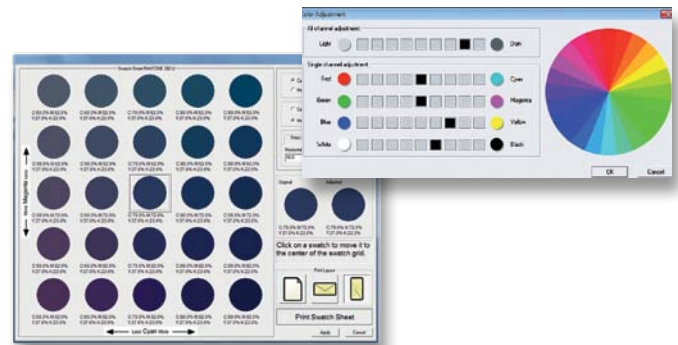
The ink is supplied by four 10-liter bladder containers (CMYK). These are housed in a pull-out drawer under the product transport and allow easy access to change the ink containers. A small intermediate ink reservoir in the print engine supplies the print heads during the bladder change, so printing production is not interrupted.



Ink supply

Simple and precise color management

The integrated color management software allows the selection of different ICC profiles and provides access to Pantone color libraries. In addition, the software offers further support for the display and color matching of a special color. Color tables facilitate color matching and provide a preview of the expected color result, and thus considerably shorten the setting process.



Technical specification

Type		W+D Halm i-Jet 2	
Maximum output	products/h	up to 32,000	
Paper weight	Envelopes/Pockets	60 – 100 g/m ² (16 – 26 lbs)	
	Blanks	80 – 200 g/m ² (22 – 53 lbs)	
Paper thickness		0.1 – 0.8 mm (0.004 – 0.032")	
Size range:		min. 90 mm (3 1/4") ① x 100 mm (3 7/8") – max. 330 mm (13") x 330 mm (13")	
Print width		max. 220 mm (8 5/8")	
Atmospheric pressure		70 kPa – 106 kPa	
Temperature range		15° C – 35° C (59° F – 95° F)	
Relative humidity range		20 % – 80 % RH	
Dimensions and weight	Length x Width x Height	6,250 mm x 1,960 mm x 1,940 mm (20,5 ft x 6,4 ft x 6,3 ft)	
	Net weight	1,500 kg (3,225 lb)	
Connected load ②		22 kVA	
Noise emission	(EN 13032)	85 dB (A)	

① Size heights of < 100 mm can only be processed by the upper feed unit (optional). Windowed envelopes and self-seal gumming envelopes can only be processed by the lower feed unit upright (seal flap longitudinally orientated in running direction).

② Machine supplied with 10 m power cord, must be wired to local code

All performance data published refers to the production of a defined reference product under certain circumstances reflecting a possible practice of use. The performances achieved in practice depend on a multitude of parameters which are beyond our control. This includes, amongst other factors, the condition of the raw materials to be processed, the shapes of the products, the air humidity and the ambient temperature. W+D reserves the right to make design changes and changes to the performance values.



W+D Locations

Winkler+Dünnebier GmbH

Sohler Weg 65
56564 Neuwied · Germany
t. +49 2631 840 · f. +49 2631 84590
info@w-d.de

Winkler+Dünnebier GmbH

Location Bad Oeynhausen
Valdorfer Straße 3
32545 Bad Oeynhausen · Germany
t. +49 5731 7440 · f. +49 5731 744199
info.ins@w-d.de

W+D North America Inc.

11300 West 80th Street
Lenexa, KS 66214 · USA
t. +1 913 4929880 · f. +1 913 4920691
info@wdnorthamerica.com

W+D Asia Pacific Sdn. Bhd

(Co No: 762144A)
No: 860, 8th Floor, Block A2
Leisure Commerce Square
No: 9, Jalan PJS 8/9, 46150 Petaling Jaya
Selangor · Malaysia
t. +60 3 78654883 · f. +60 3 78654882
info@w-d.com.my

POEM PreOwnedEnvelopeMachines GmbH

Sohler Weg 70
56564 Neuwied · Germany
t. +49 2631 345386 · f. +49 2631 946103
info.poem@w-d.de · w-d-poem.de

BICMA Hygiene Technologie GmbH

Basaltweg 3
56727 Mayen · Germany
t. +49 2651 942940 · f. +49 2651 9429494
mail@bicma.com · bicma.com

